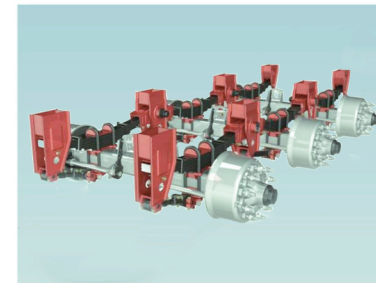
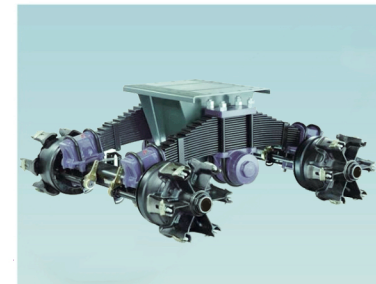
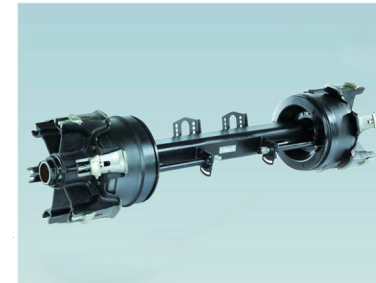
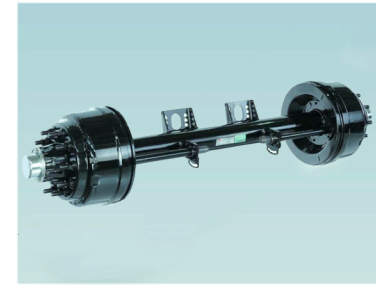


# AXLE SUSPENSION CASTING

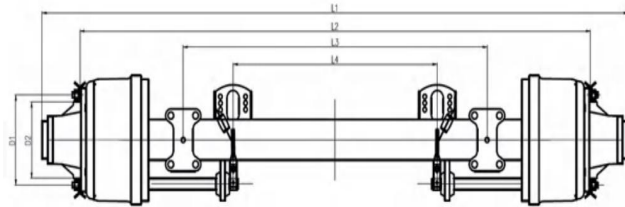


# 目录 CATALOG

制动鼓内置式系列 INBOARD DRUM AXLE SERIES.....	1
盘刹车桥系列 DISC BRAKE BRIDGE SERIES.....	2
德式车桥系列 GERMAN TYPE AXLE SERIES.....	3
制动鼓外置式系列 OUTBOARD DRUM AXLE SERIES.....	4
辐式车桥系列 SPOKE AXLE SERIES.....	5
低平板系列 LOW-LOADER SERIES.....	6
凹心车桥系列 CONCAVE CENTER AXLE SERIES.....	7
液压转向车桥系列 HYDRAULIC STEERING AXLE SERIES.....	8
轴线桥系列 LAXIS AXLE SERIES .....	9
美式光轴系列 AMERICAN AXLE TUBE SERIES.....	10
德式光轴系列 GERMAN AXLE TUBE SERIES.....	11
空气悬挂系列 AIR SUSPENSION SERIES.....	12

美式反装悬挂系列 AMERICAN UNDERSLUNG SUSPENSION SERIES.....	13
美式正装悬挂系列 AMERICAN TYPE SUSPENSION SERIES.....	14-15
低平板系列 LOW-LOADER SERIES66 轻型悬挂系列 66 TYPE SUSPENSION SERIES.....	16
68 轻型悬挂系列 68 TYPE SUSPENSION SERIES.....	17
美式轻型悬挂 AMERICAN LIGHT DUTY SERIES.....	18
美式正装圆桥悬挂 ROUND-AXLE SUSPENSION SERIES.....	19
德式悬挂系列 GERMAN SUSPENSION SERIES.....	20
单点悬挂系列 BOGIE SUSPENSION SERIES.....	21
刚性悬挂 (两线四轴) FOUR-AXLE CANTILEVER SERIES.....	22
刚性悬挂 (三线六轴) SIX-AXLE CANTILEVER SERIES.....	23

## 制动鼓内置式系列 INBOARD DRUM AXLE SERIES



型号 MODEL	承载力 CAPACITY	制动器 BRAKE	制动气室中心距 DISTANCE OF BRAKE CHAMBER L4	轴管 AXLE TUBE	弹簧座中心距 CENTER DISTANCE OF SPRING SEAT L3	轮毂轮辋连接 WHEEL FIXING			轮距 TRACK L2	轴承型号 BEARING INNER/OUTER	总长 TOTAL LENGTH	重量 WEIGHT	推荐轮辋 RECOMMENDED WHEEL
	(t)		(mm)	(mm)	连接螺栓 STUD	分布圆 P.C.D D1	制动鼓止口 SEAM ALLOWANCE D2	(mm)	L1(mm)	(kg)			
2300 002 001 0	13	420×180	390	Φ127	≥970	10-M22×1.5	285.75	221.8	1840	HM220149/10 HM518445/10	≈2180	360	7.50V-20
2300 002 002 0	13	420×180	382	Φ127	≥970	10-M22×1.5	335	280.8	1840	HM220149/10	≈2180	345	7.50V-20
2300 002 003 0	13	420×180	385	□150	≥930	10-M22×1.5	285.76	220.8	1840	HM518445/10	≈2180	360	7.50V-20
2300 002 004 0	13	420×180	382	□150	≥930	10-M22×1.5	335	280.8	1840	HM518445/10	≈2180	340	7.50V-20
2300 002 005 0	14	420×220	350	□150	≥930	10-M22×1.5	335	280.8	1840	HM518445/10	≈2180	358	7.50V-20
2300 002 006 0	16	420×220	350	Φ127	≥980	10-M22×1.5	335	280.8	1850	HM220149/10 HM518445/10	≈2200	360	8.0V-20
2300 002 007 0	16	420×220	350	□150	≥940	10-M22×1.5	335	280.8	1850	HM220149/10 HM518445/10	≈2200	390	8.0V-20
2300 002 008 0	20	420×220	345	□150	≥940	10-M24×1.5	335	280.8	1850	HM32222 HM518445/10	≈2256	430	8.0V-20

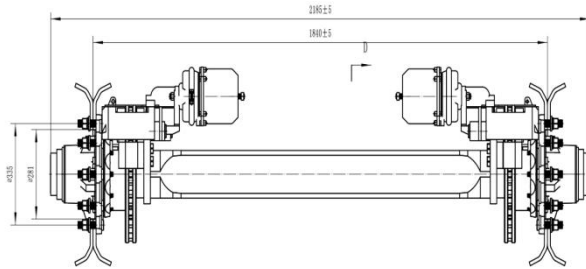
☆L2 轮距可按照客户要求定做

☆OPTIONAL TRACK LENGTH IS AVAILABLE.

☆ABS 和调整臂可按照客户要求定做

☆OPTIONAL ABS AND AUTOMATIC SLACK ADJUSTER IS AVAILABLE.

## 盘刹车桥系列 DISC BRAKE BRIDGE SERIES

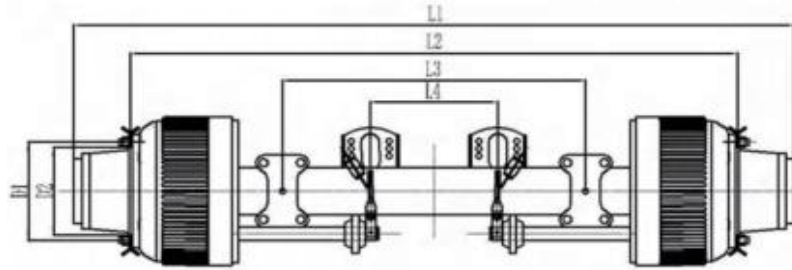


型号	额定负载	轴承型号	轴管	刹车盘尺寸	轮距	分布圆直径	轮胎螺栓	钢圈尺寸
MODEL	CAPACITY(t)	BEARING SIZE	AXLE BEAM(mm)	BRAKE DISE SIZE	TRACK (mm)	P.C.D(mm)	TIRESREM	RIM SIZE
2300 003 001 0	13	内 518445 外 518445	150×150	Φ430×45	1840	Φ335	10-M22×1.5	Φ281

☆长度可按照客户要求定做

☆OPTIONAL LENGTH IS AVAILABLE.

### 德式车桥系列 GERMAN TYPE AXLE SERIES



型号 MODEL	承载力 CAPACITY	制动器 BRAKE	制动气室 中心距 L4	轴管 AXLE TUBE	弹簧座中 心距 L3	轮毂轮辋连接 WHEEL FIXING			轮距 TRACK L2 (mm)	轴承型号 BEARING INNER/OUTER	总长 TOTAL LENGTH L1(mm)	重量 WEIGHT (kg)	推荐轮辋 RECOMMENDED WHEEL
	(t)			(mm)		连接螺栓 STUD	分布圆 P.C.D D1	制动鼓止口 SEAM ALLOWANCE D2					
2300 004 001 0	12	420×180	420	□150	≥980	10-M22×1.5	335	280.8	1840	33118 33213	≈2158	375	7.50V-20
2300 004 002 0	13	420×200	360	□150	≥900	10-M22×1.5	335	280.8	1840	33118 33213	≈2158	390	7.50V-20
2300 004 003 0	14	420×200	356	□150	≥900	10-M22×1.5	335	280.8	1840	33119 33215	≈2172	420	8.0V-20
2300 004 004 0	16	420×200	365	□150	≥900	10-M22×1.5	335	280.8	1850	32222 32314	≈2145	445	8.50V-20

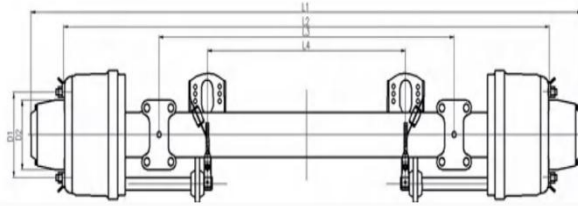
☆L2 轮距可按照客户要求定做

☆OPTIONAL TRACK LENGTH IS AVAILABLE.

☆ABS 和调整臂可按照客户要求定做

☆OPTIONAL ABS AND AUTOMATIC SLACK ADJUSTER IS AVAILABLE.

## 制动鼓外置式系列 OUTBOARD DRUM AXLE SERIES



型号 MODEL	承载力 CAPACITY	制动器 BRAKE	制动气室中心距 DISTANCE OF BRAKE CHAMBER L4	轴管 AXLE TUBE (mm)	弹簧座中心距 CENTER DISTANCE OF SPRING SEAT L3	轮毂轮辋连接 WHEEL FIXING			轮距 TRACK L2 (mm)	轴承型号 BEARING INNER/OUTER	总长 TOTAL LENGTH L1(mm)	重量 WEIGHT (kg)	推荐轮辋 RECOMMENDED WHEEL
	(t)					连接螺栓 STUD	分布圆 P.C.D D1	制动鼓止口 SEAM ALLOWANCE D2					
2300 005 001 0	13	420×180	388	Φ127	≥970	10-M22×1.5	335	280.8	1840	HM518445/10	≈2180	365	7.50V-20
2300 005 002 0	13	420×200	372	Φ127	≥970	10-M22×1.5	285.75	220.8	1840	HM518445/10	≈2180	348	7.50V-20
2300 005 003 0	13	420×200	372	Φ127	≥970	10-M22×1.5	335	280.8	1840	HM518445/10	≈2180	360	7.50V-20
2300 005 004 0	13	420×180	392	□127	≥970	10-M22×1.5	285.75	220.8	1840	HM220149/10	≈2180	340	7.50V-20
2300 005 005 0	13	420×180	388	□127	≥970	10-M22×1.5	335	280.8	1840	HM518445/10	≈2180	358	7.50V-20
2300 005 006 0	13	420×200	372	□127	≥970	10-M22×1.5	285.75	220.8	1840	HM518445/10	≈2180	343	7.50V-20
2300 005 007 0	13	420×200	372	□127	≥970	10-M22×1.5	335	280.8	1840	HM518445/10	≈2180	355	7.50V-20
2300 005 008 0	13	420×180	392	□150	≥930	10-M22×1.5	285.75	220.8	1840	HM220149/10	≈2180	343	7.50V-20
2300 005 009 0	13	420×180	388	□150	≥930	10-M22×1.5	335	280.8	1840	HM518445/10	≈2180	362	7.50V-20
2300 005 010 0	13	420×220	372	□150	≥930	10-M22×1.5	285.75	220.8	1840	HM518445/10	≈2180	348	7.50V-20

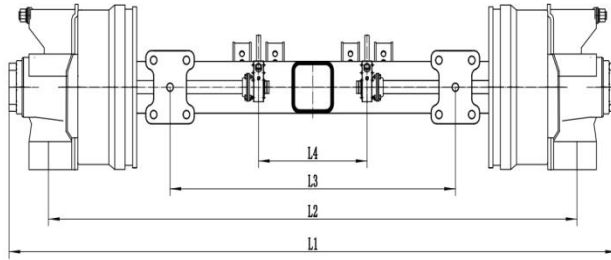
☆L2 轮距可按照客户要求定做

☆OPTIONAL TRACK LENGTH IS AVAILABLE.

☆ABS 和调整臂可按照客户要求定做

☆OPTIONAL ABS AND AUTOMATIC SLACK ADJUSTER IS AVAILABLE.

## 辐式车桥系列 SPOKE AXLE SERIES



型号	承载力	制动器	制动气室中心距	轴管	弹簧座中心距	轮毂轮辋连接 WHEEL FIXING			轮距	轴承型号	总长	重量	推荐轮辋
MODEL	CAPACITY	BRAKE	DISTANCE OF BRAKE CHAMBER L4	AXLE TUBE (mm)	CENTER DISTANCE OF SPRING SEAT L3	连接螺栓 STUD	分布圆 P.C.D D1	制动鼓止口 SEAM ALLOWANCE D2	TRACK L2 (mm)	BEARING INNER/OUTE R	TOTAL LENGTH	WEIGHT (kg)	RECOMMENDED WHEEL
	(t)										L1(mm)		
2300 006 001 0	13	420×180	383	Φ127	≥980	5-M22×1.5	Φ285.75	Φ241	1850	HM518445	≈2180	375	20 # ×5 辐条式
2300 006 002 0	13	420×180	383	Φ127	≥980	5-M22×1.5	Φ285.75	Φ241	1850	HM518445	≈2180	380	20 # ×6 辐条式
2300 006 003 0	13	420×200	383	□127	≥980	5-M22×1.5	Φ285.75	Φ241	1850	HM518445	≈2180	370	20 # ×5 辐条式
2300 006 004 0	13	420×200	383	□127	≥980	5-M22×1.5	Φ285.75	Φ241	1850	HM518445	≈2180	375	20 # ×6 辐条式
2300 006 005 0	13	420×180	383	□150	≥940	5-M22×1.5	Φ285.75	Φ241	1850	HM518445	≈2180	370	20 # ×5 辐条式
2300 006 006 0	13	420×180	383	□150	≥940	5-M22×1.5	Φ285.75	Φ241	1850	HM518445	≈2180	378	20 # ×6 辐条式

☆L2 轮距可按照客户要求定做

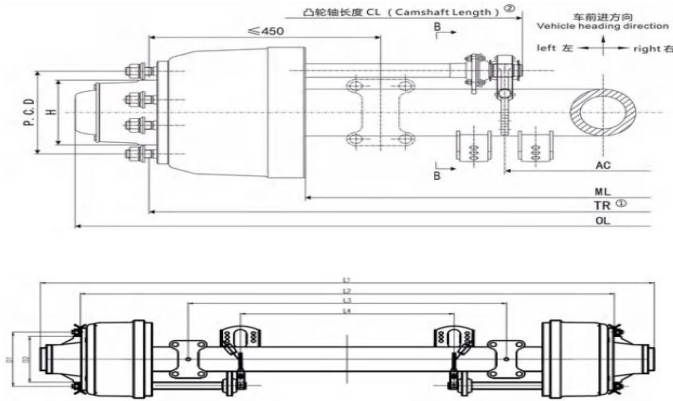
☆OPTIONAL TRACK LENGTH IS AVAILABLE.

☆ABS 和调整臂可按照客户要求定做

☆OPTIONAL ABS AND AUTOMATIC SLACK ADJUSTER IS AVAILABLE.



## 低平板系列 LOW-LOADER SERIES



型号 MODEL	承载力 CAPACITY	制动器 BRAKE	制动气室 中心距 DISTANCE OF BRAKE CHAMBER L4	轴管 AXLE TUBE (mm)	弹簧座中心 距 CENTER DISTANCE OF SPRING SEAT L3	轮毂轮辋连接 WHEEL FIXING			轮距 TRACK L2 (mm)	轴承型号 BEARING INNER/OUTER	总长 TOTAL LENGTH	重量 WEIGHT (kg)	推荐轮辋 RECOMMENDED WHEEL
	(t)				连接螺栓 STUD	分布圆 P.C.D D1	制动鼓止口 SEAM ALLOWANC E D2	L1(mm)					
2300 007 001 0	10	311×190	420	Φ127	≥1000	10-M22×1.5	225	176	1850	HM58445	≈2166	275	6.5-16
2300 007 002 0	11	311×190	448	Φ127	≥1000	10-M22×1.5	225	176	1850	33213 HM58445	≈2166	290	6.5-16

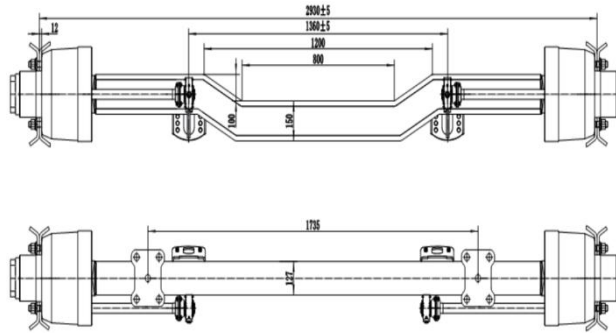
☆L2 轮距可按照客户要求定做

☆OPTIONAL TRACK LENGTH IS AVAILABLE.

☆ABS 和调整臂可按照客户要求定做

☆OPTIONAL ABS AND AUTOMATIC SLACK ADJUSTER IS AVAILABLE.

### 凹心车桥系列 CONCAVE CENTER AXLE SERIES

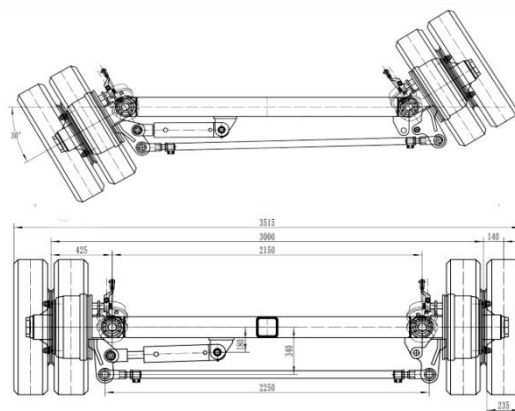


型号	额定负载	轴承型号	轴管	制动器尺寸	分布圆直径	轮胎螺栓	钢圈尺寸
MODEL	CAPACITY (t)	BEARING SIZE	AXLE BEAM(mm)	BRAKE TRACK	P.C.D(mm)	TIRESREM	RIM SIZE
2300 008 001 0	11	内 518445 外 518445	150×127	Φ311×190	Φ225	10-M22×1.5	Φ281

☆可变参数: 轮距 2930、凹心距 100、凹心长度 800、气室中心距 1360

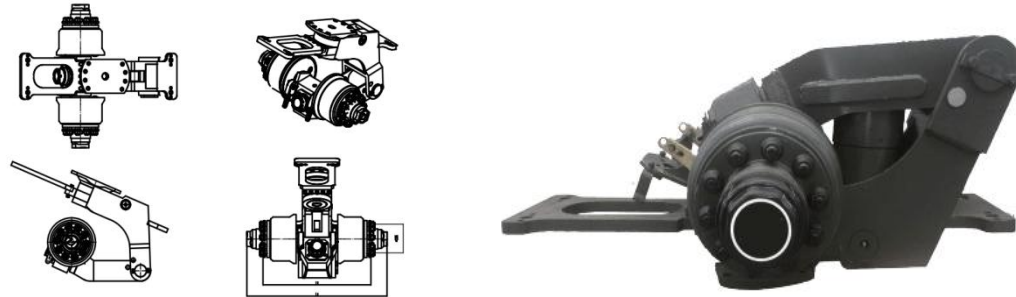
☆OPTIONAL LENGTH IS AVAILABLE.

## 液压转向车桥系列 HYDRAULIC STEERING AXLE SERIES



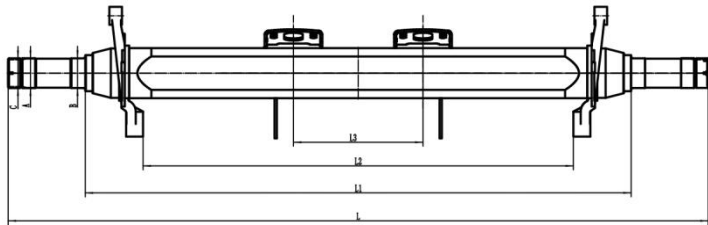
型号	额定负载	轴承型号	轴管	刹车片尺寸	轮距 L	分布圆直径	轮胎螺栓	钢圈尺寸	气室中心距	总长
MODEL	CAPACITY (t)	BEARING SIZE	AXLE BEAM(mm)	BRAKE TRACK	TRACK	P.C.D(mm)	TIRESREM	RIM SIZE	DISTANCE OF BRAKE CHAMBER	TOTAL LENGTH (mm)
2300 009 001 0	13t	HM518445 HM518445	150×150	Φ420×180	2350	Φ335	10-M22×1.5	Φ281	1510	2670
2300 009 002 0	16t	HM518445 220149	150×150	Φ420×180	2350	Φ335	10-M22×1.5	Φ281	1510	2670
2300 009 003 0	18t	32220 30615	150×150	Φ420×180	2350	Φ335	10-M22×1.5	Φ281	1510	2670

### 轴线桥系列 LAXIS AXLE SERIES



型号	额定负载	中心高 H	中孔Φ	轴承型号	刹车片尺寸	轮距	分布圆直径	轮胎螺栓	钢圈尺寸
MODEL	CAPACITY (t)	CENTRAL HEIGHT	DIA OF BORE	BEARING SIZE	BRAKE TRACK	TRACK (mm)	P.C.D (mm)	TIRESREM	RIM SIZE
2300 010 001 0	10	125	Φ90	HM518445 HM518445	Φ300×140	900	Φ225	10-M22×1.5	Φ176

### 美式光轴系列 AMERICAN AXLE TUBE SERIES

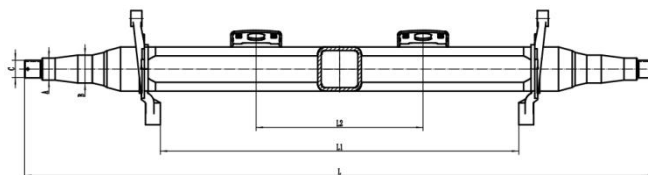


型号	额定负载	A/B (mm)	C	轴管	制动室中心距 L3	L2	L1	总长	重量
MODEL	CAPACITY (t)	A/B (mm)	C	AXLE TUBE (mm)	DISTANCE OF BRAKE CHAMBER L3	L2 (mm)	L1 (mm)	TOTAL LENGTH L(mm)	WEIGHT (kg)
2300 011 001 0	13	88.9/88.9	3.48 #	150×150×12	382	1297	1644	2108	116
2300 011 002 0	16	88.9/100	3.48 #	150×150×16	342	1257	1644	2128	144

☆长度可按照客户要求定做

☆OPTIONAL LENGTH IS AVAILABLE.

## 德式光轴系列 GERMAN AXLE TUBE SERIES

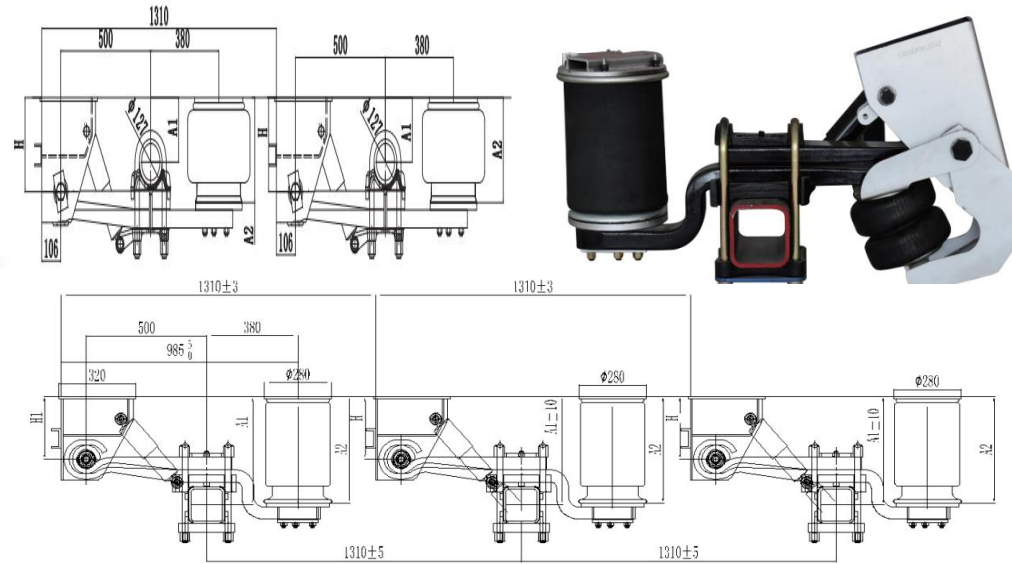


型号	额定负载	A/B (mm)	C (mm)	轴管	制动室中心距	L1 (mm)	总长	重量
MODEL	CAPACITY (t)	A/B (mm)	C (mm)	AXLE TUBE (mm)	DISTANCE OF BRAKE CHAMBER L2	L1 (mm)	TOTAL LENGTH L(mm)	WEIGHT (kg)
2300 012 001 0	12	65/90	M52×2	150×150×12	420	1230	2122	120
2300 012 002 0	14	75/95	M60×2	150×150×14	355	1645	2156	135
2300 012 003 0	16	70/110	M60×2	150×150×16	365	1645	2223	142

☆长度可按照客户要求定做

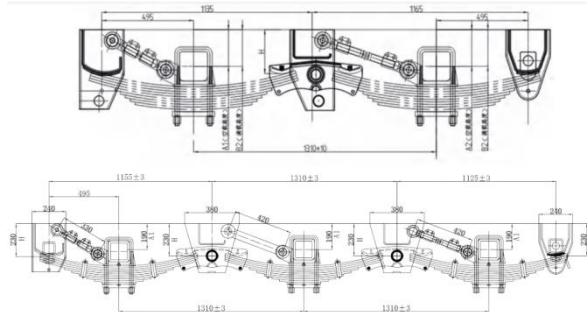
☆OPTIONAL LENGTH IS AVAILABLE.

## 空气悬挂系列 AIR SUSPENSION SERIES



MODEL	H1 (mm)	A2 (mm)	A1 (mm)	L1 (mm)	L2 (mm)	CAPACITY (t)
2300 013 001 0	280	475	420	500	380	11000

## 美式反装悬挂系列 AMERICAN UNDERSLUNG SUSPENSION SERIES



MODEL	H (mm)	A1 (mm)	B1 (mm)	A2 (mm)	B2 (mm)	CAPACITY (t)		
2300 014 001 0	230	188	158	179	149	13000*2		
2300 014 002 0	250	208	178	199	169	13000*2		
2300 014 003 0	300	508	228	249	219	13000*2		
2300 014 004 0	320	278	248	269	239	13000*2		
MODEL	H (mm)	A1 (mm)	B1 (mm)	A2 (mm)	B2 (mm)	A3 (mm)	B3 (mm)	CAPACITY (t)
2300 014 005 0	230	188	158	179	149	170	140	13000*3
2300 014 006 0	250	208	178	199	169	190	160	13000*3
2300 014 007 0	300	508	228	249	219	240	210	13000*3
2300 014 008 0	320	278	248	269	239	260	230	13000*3

☆BALANCE ARM PIN 50MM OR 60MM CAN BE CHOSEN.

☆THE THICKNESS OF HANGER CAN BE 6MM, 8MM, 10MM.

☆SPRING SPECIFICATION: WIDTH 90MM, 100MM, 120MM; THE QUANTITY OF LEAVES IS OPTIONAL.



## 美式正装悬挂系列 AMERICAN TYPE SUSPENSION SERIES

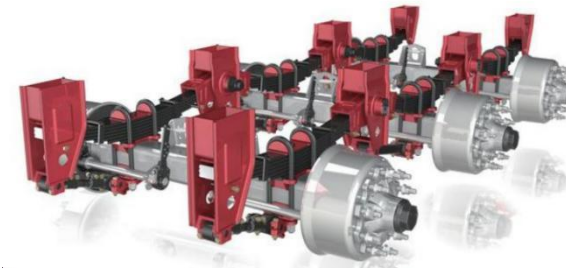
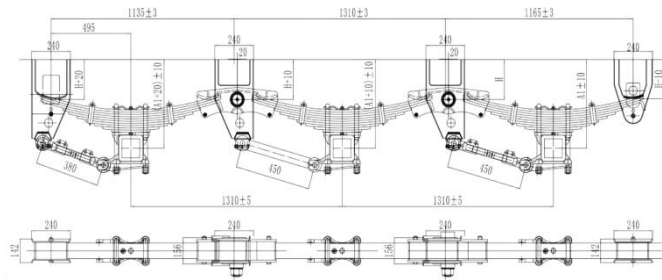


MODEL	H (mm)	A1 (mm)	B1 (mm)	A2 (mm)	B2 (mm)	CAPACITY (t)		
2300 015 001 0	110	399	369	390	360	13000*2		
2300 015 002 0	130	419	389	410	380	13000*2		
2300 015 003 0	150	439	409	430	400	13000*2		
2300 015 004 0	180	469	439	460	430	13000*2		
2300 015 005 0	210	499	469	490	460	13000*2		
2300 015 006 0	230	519	489	510	480	13000*2		
2300 015 007 0	250	539	509	530	500	13000*2		
2300 015 008 0	270	559	529	550	520	13000*2		
2300 015 009 0	300	589	559	580	550	13000*2		
2300 015 010 0	320	609	579	600	570	13000*2		
2300 015 011 0	350	639	609	630	600	13000*2		

☆BALANCE ARM PIN 50MM OR 60MM CAN BE CHOSEN.

☆THE THICKNESS OF HANGER CAN BE 6MM, 8MM, 10MM.

☆SPRING SPECIFICATION: WIDTH 90MM, 100MM, 120MM; THE QUANTITY OF LEAVES IS OPTIONAL.



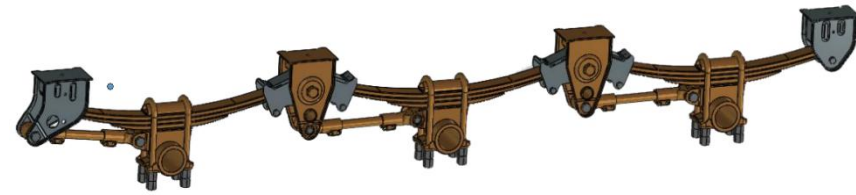
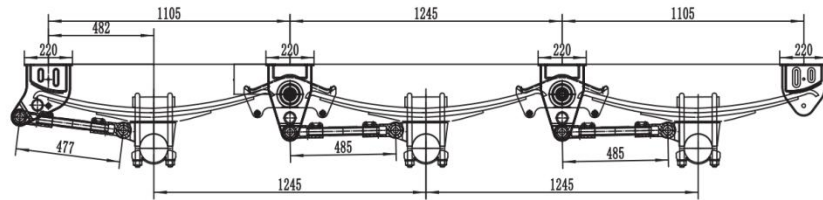
MODEL	H (mm)	A1 (mm)	B1 (mm)	A2 (mm)	B2 (mm)	A3 (mm)	B3 (mm)	CAPACITY (t)
2300 015 012 0	110	399	369	390	360	381	351	13000*3
2300 015 013 0	130	419	389	410	380	401	371	13000*3
2300 015 014 0	150	439	409	430	400	421	391	13000*3
2300 015 015 0	180	469	439	460	430	451	421	13000*3
2300 015 016 0	210	499	469	490	460	481	451	13000*3
2300 015 017 0	230	519	489	510	480	501	471	13000*3
2300 015 018 0	250	539	509	530	500	521	491	13000*3
2300 015 019 0	270	559	529	550	520	541	511	13000*3
2300 015 020 0	300	589	559	580	550	571	541	13000*3
2300 015 021 0	320	609	579	600	570	591	561	13000*3
2300 015 022 0	350	639	609	630	600	621	591	13000*3

☆BALANCE ARM PIN 50MM OR 60MM CAN BE CHOSEN.

☆THE THICKNESS OF HANGER CAN BE 6MM, 8MM, 10MM.

☆SPRING SPECIFICATION: WIDTH 90MM, 100MM, 120MM; THE QUANTITY OF LEAVES IS OPTIONAL

## 66 轻型悬挂系列 66 TYPE SUSPENSION SERIES

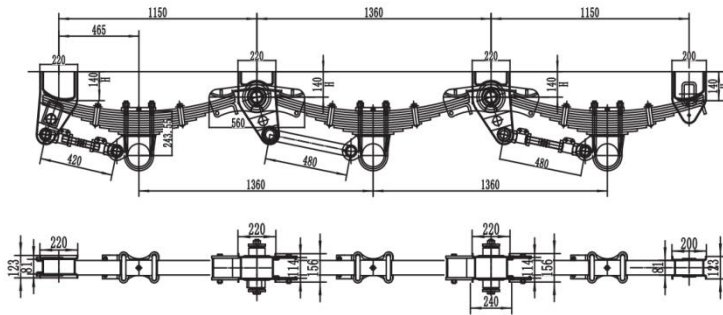


MODEL	H (mm)	A1 (mm)	A2 (mm)	CAPACITY (t)	
2300 016 001 0	130	380	380	11000*2	
2300 016 002 0	150	400	400	11000*2	
2300 016 003 0	180	430	430	11000*2	
2300 016 004 0	210	460	460	11000*2	
2300 016 005 0	230	480	480	11000*2	
MODEL	H (mm)	A1 (mm)	A2 (mm)	A3 (mm)	CAPACITY (t)
2300 016 006 0	130	380	380	380	11000*3
2300 016 007 0	150	400	400	400	11000*3
2300 016 008 0	180	430	430	430	11000*3
2300 016 009 0	210	460	460	460	11000*3
2300 016 010 0	230	480	480	480	11000*3

☆MATERIAL OF HANGER IS Q345, THICKNESS IS 4MM.

☆THE WIDTH OF SPRING IS 75MM, THE QUANTITY OF LEAVES IS OPTIONAL.

## 68 轻型悬挂系列 68 TYPE SUSPENSION SERIES



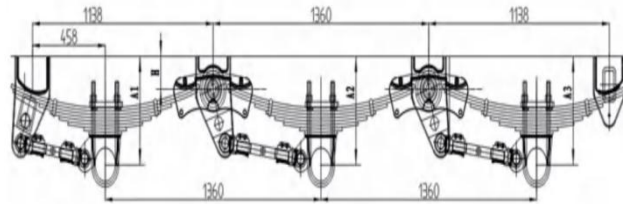
MODEL	H (mm)	A1 (mm)	B1 (mm)	A2 (mm)	B2 (mm)	CAPACITY1 (t)	A3 (mm)	B3 (mm)	CAPACITY2 (t)
2300 017 001 0	110	400	370	391	361	13000*2	382	352	13000*3
2300 017 002 0	130	420	390	411	381	13000*2	402	372	13000*3
2300 017 003 0	150	440	410	431	401	13000*2	422	392	13000*3
2300 017 004 0	180	470	440	461	431	13000*2	452	422	13000*3
2300 017 005 0	210	490	470	491	461	13000*2	482	452	13000*3
2300 017 006 0	230	510	490	511	481	13000*2	502	472	13000*3
2300 017 007 0	250	530	510	531	501	13000*2	522	492	13000*3
2300 017 008 0	270	560	530	551	521	13000*2	542	512	13000*3
2300 017 009 0	300	580	560	581	551	13000*2	572	542	13000*3
2300 017 010 0	320	610	580	601	571	13000*2	592	562	13000*3
2300 017 011 0	350	640	610	631	601	13000*2	622	592	13000*3

☆BALANCE ARM PIN 50MM OR 60MM CAN BE CHOSEN.

☆THE THICKNESS OF HANGER CAN BE 6MM, 8MM, 10MM.

☆SPRING SPECIFICATION: WIDTH 90MM, 100MM, 120MM; THE QUANTITY OF LEAVES IS OPTIONAL.

### 美式轻型悬挂 AMERICAN LIGHT DUTY SERIES

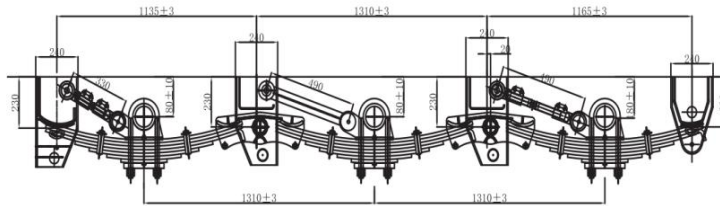


MODEL	H (mm)	A1 (mm)	A2 (mm)	CAPACITY (t)		
2300 018 001 0	130	406	406	11000*2		
2300 018 002 0	150	426	426	11000*2		
2300 018 003 0	180	456	456	11000*2		
2300 018 004 0	210	486	486	11000*2		
2300 018 005 0	230	506	506	11000*2		
MODEL	H (mm)	A1 (mm)	A2 (mm)	A3 (mm)	CAPACITY (t)	
2300 018 006 0	130	406	406	406	11000*3	
2300 018 007 0	150	426	426	426	11000*3	
2300 018 008 0	180	456	456	456	11000*3	
2300 018 009 0	210	486	486	486	11000*3	
2300 018 010 0	230	506	506	506	11000*3	

☆MATERIAL OF HANGER IS Q345, THICKNESS IS 4MM.

☆THE WIDTH OF SPRING IS 75MM, THE QUANTITY OF LEAVES IS OPTIONAL.

## 美式正装圆桥悬挂 ROUND-AXLE SUSPENSION SERIES



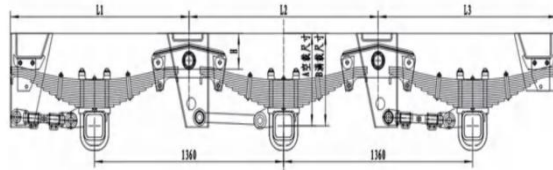
MODEL	H (mm)	A1 (mm)	B1 (mm)	A2 (mm)	B2 (mm)	CAPACITY1 (t)	A3 (mm)	B3 (mm)	CAPACITY2 (t)
2300 019 001 0	110	400	370	391	361	13000*2	382	352	13000*3
2300 019 002 0	130	420	390	411	381	13000*2	402	372	13000*3
2300 019 003 0	150	440	410	431	401	13000*2	422	392	13000*3
2300 019 004 0	180	470	440	461	431	13000*2	452	422	13000*3
2300 019 005 0	210	490	470	491	461	13000*2	482	452	13000*3
2300 019 006 0	230	510	490	511	481	13000*2	502	472	13000*3
2300 019 007 0	250	530	510	531	501	13000*2	522	492	13000*3
2300 019 008 0	270	560	530	551	521	13000*2	542	512	13000*3
2300 019 009 0	300	580	560	581	551	13000*2	572	542	13000*3
2300 019 010 0	320	610	580	601	571	13000*2	592	562	13000*3
2300 019 011 0	350	640	610	631	601	13000*2	622	592	13000*3

☆BALANCE ARM PIN 50MM OR 60MM CAN BE CHOSEN.

☆THE THICKNESS OF HANGER CAN BE 6MM, 8MM, 10MM.

☆SPRING SPECIFICATION: WIDTH 90MM, 100MM, 120MM; THE QUANTITY OF LEAVES IS OPTIONAL.

### 德式悬挂系列 GERMAN SUSPENSION SERIES



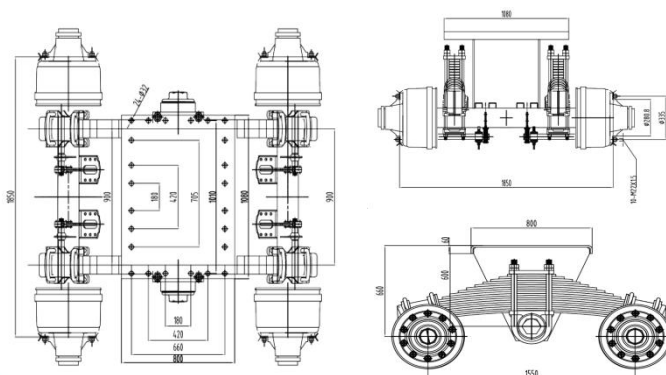
MODEL	L (mm)	L2 (mm)	A (mm)	B (mm)			
2300 020 001 0	1285	1285	480	450			
MODEL	L (mm)	L2 (mm)	L3 (mm)	A (mm)	B (mm)		
2300 020 002 0	1285	1360	1285	480	450		

☆BALANCE ARM PIN 50MM OR 60MM CAN BE CHOSEN.

☆THE THICKNESS OF HANGER CAN BE 6MM, 8MM, 10MM.

☆SPRING SPECIFICATION: WIDTH 90MM, 100MM, 120MM; THE QUANTITY OF LEAVES IS OPTIONAL.

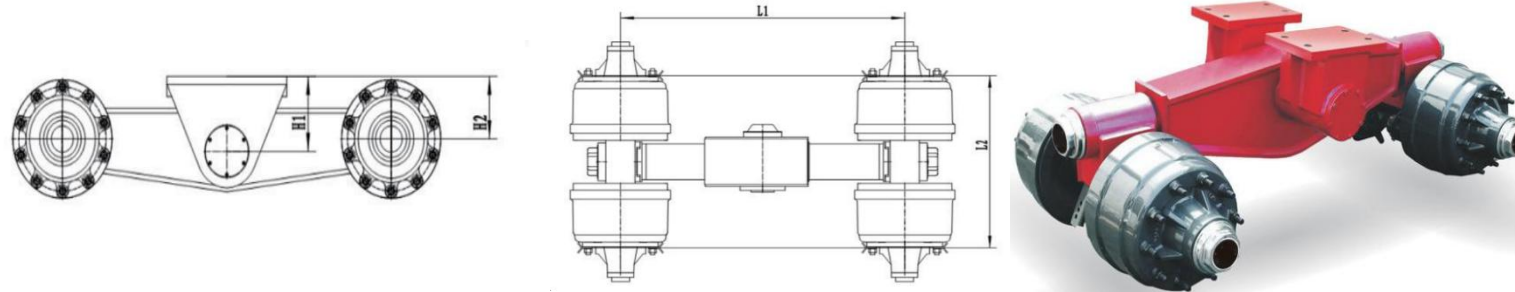
### 单点悬挂系列 BOGIE SUSPENSION SERIES



MODEL	CAPACITY	PLATEL SPRING	CENTER DISTANCE	WHEEL BASE	TRACK	P.C.D (mm)	SEAM ALLOWANCE
2300 021 001 0	24000	90*18	905	1400	1840	335	Φ280.8
2300 021 002 0	28000	120*17	900	1550	1850	335	Φ280.8
2300 021 003 0	32000	120*17	900	1550	1850	335	Φ280.8

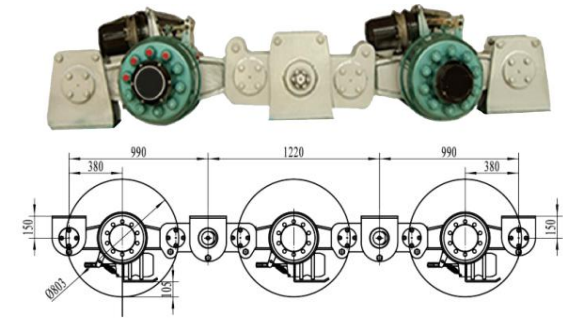
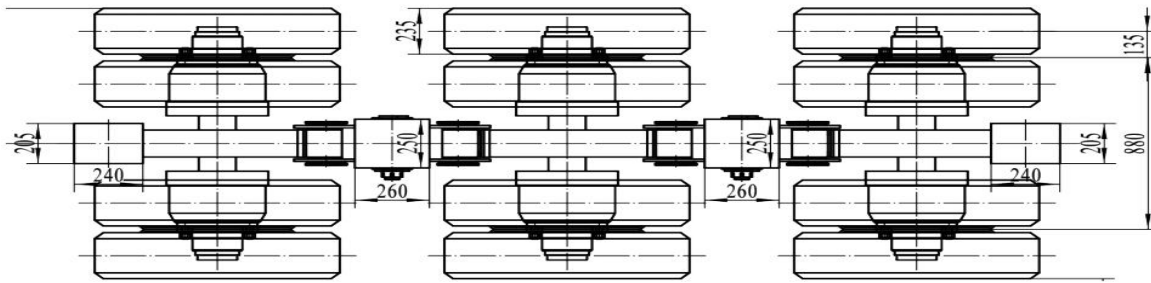


### 刚性悬挂 (两线四轴) FOUR-AXLE CANTILEVER SERIES



MODEL	WHEEL BASE L1	TRACK L2	H1	H2	BRAKE TRACK	FRONT AND REAR THE ANGULAR	ABOUT ANGULAR	RIM SIZE	TYRE	CAPACITY
2300 022 001 0	1220	815	240	200	Φ310*190	7°	7°	6.5-15	8.25-15	60000
2300 022 002 0	1362	890	240	200	Φ420*180	7°	7°	7.5-20	10.00-20	80000
2300 022 003 0	1550	965	240	200	Φ420*220	7°	7°	8.5-20	11.00-20	100000
2300 022 004 0	1220	915	240	200	Φ310*190	7°	7°	6.5-15	8.25-15	40000
2300 022 005 0	1220	865	240	200	Φ310*190	7°	7°	6.5-15	8.25-15	60000
2300 022 006 0	1450	940	240	200	Φ420*180	7°	7°	7.5-20	10.00-20	65000
2300 022 007 0	1450	965	240	200	Φ420*220	7°	7°	8.5-20	11.00-20	80000

### 刚性悬挂 (三线六轴) SIX-AXLE CANTILEVER SERIES



MODEL	WHEEL BASE L4	TRACK L5	TOTAL LENGTH L	BRACKET H	L1	L2	L3	BRAKE TRACK	FRONT AND REAR THE ANGULAR	ABOUT ANGULAR	RIM SIZE	TYRE	CAPACITY
2300 023 001 0	1220	865	3500	188-340	990	1220	990	Φ311*190	7°	7°	6.5-15	8.25-15	10000
2300 023 002 0	1320	965	3800	188-340	1090	1220	990	Φ420*180	7°	7°	7.5-20	10.00-20	10000
2300 023 003 0	1220	900	3500	188-340	990	1220	990	Φ420*180	7°	7°	6.5-20	8.25-20	10000
2300 023 004 0	1320	940	3800	188-340	1090	1220	990	Φ420*180	7°	7°	7.5-20	9.00-20	10000
2300 023 005 0	1320	940	3800	188-340	1090	1220	990	Φ420*180	7°	7°	7.0-20	9.00-20	10000
2300 023 006 0	1320	1050	3960	188-340	1090	1220	990	Φ420*220	7°	7°	8.5-20	12.00-20	15000